

PART OF SEC. 31-32, T.7N., R.3E., S.L.B. & M.
EVERGREEN PARK SUBDIVISION NO.1

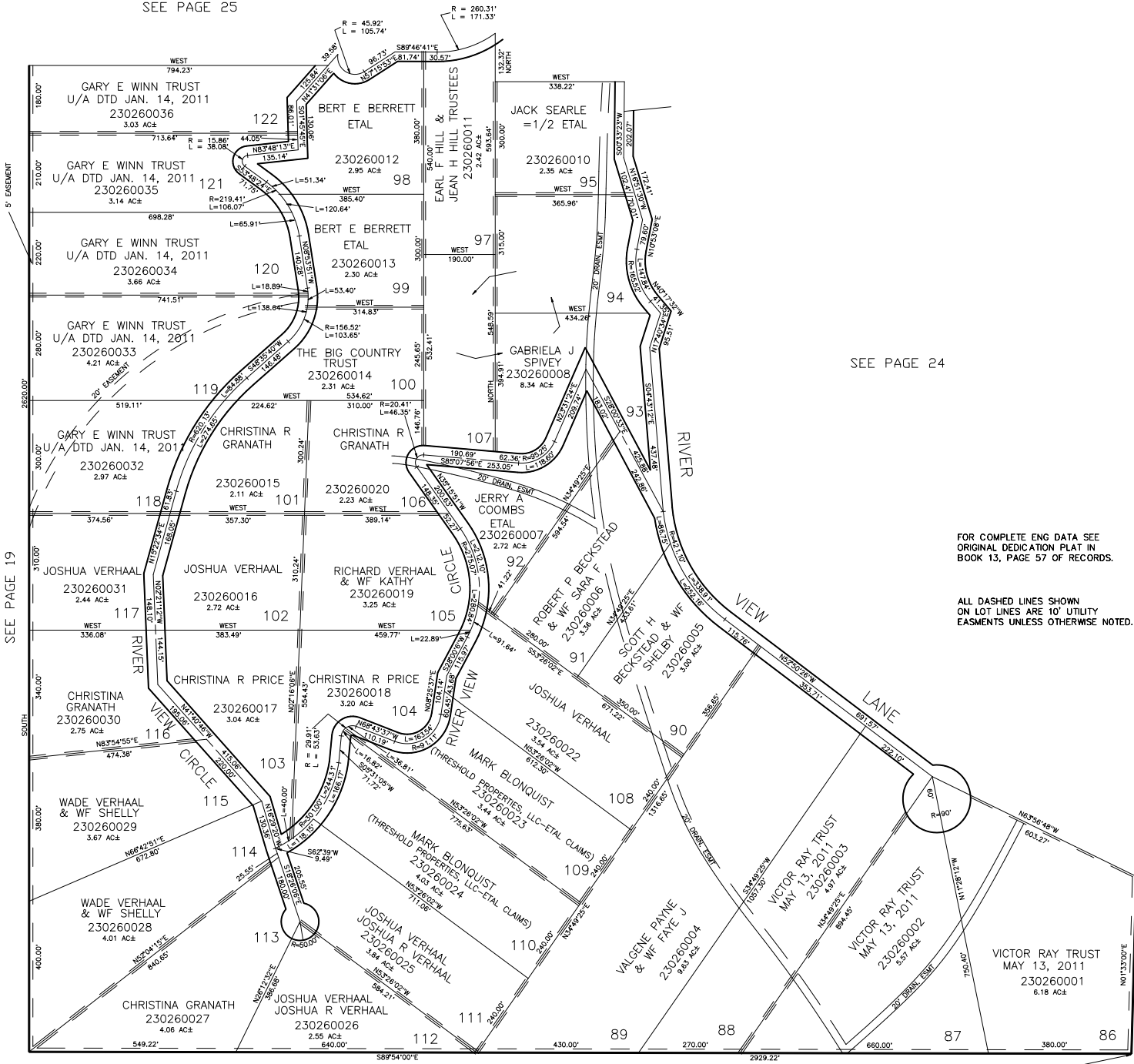
LOTS 86-95, 97-122

TAXING UNIT: 58

IN WEBER COUNTY

SCALE 1" = 200'

SEE PAGE 25



SEE PAGE 24

FOR COMPLETE ENG DATA SEE ORIGINAL DEDICATION PLAT IN BOOK 13, PAGE 57 OF RECORDS.

ALL DASHED LINES SHOWN ON LOT LINES ARE 10' UTILITY EASEMENTS UNLESS OTHERWISE NOTED.

SEE PAGE 19

SEE PAGE 20